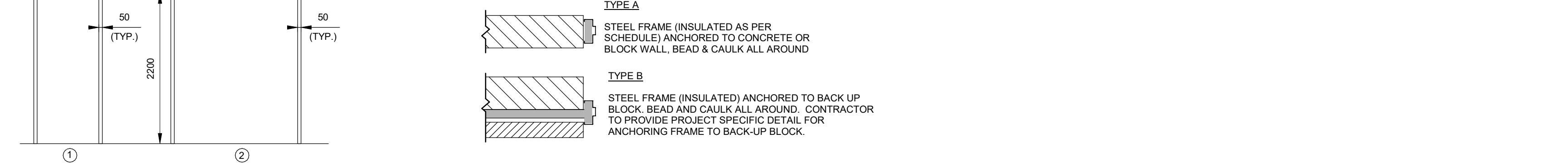
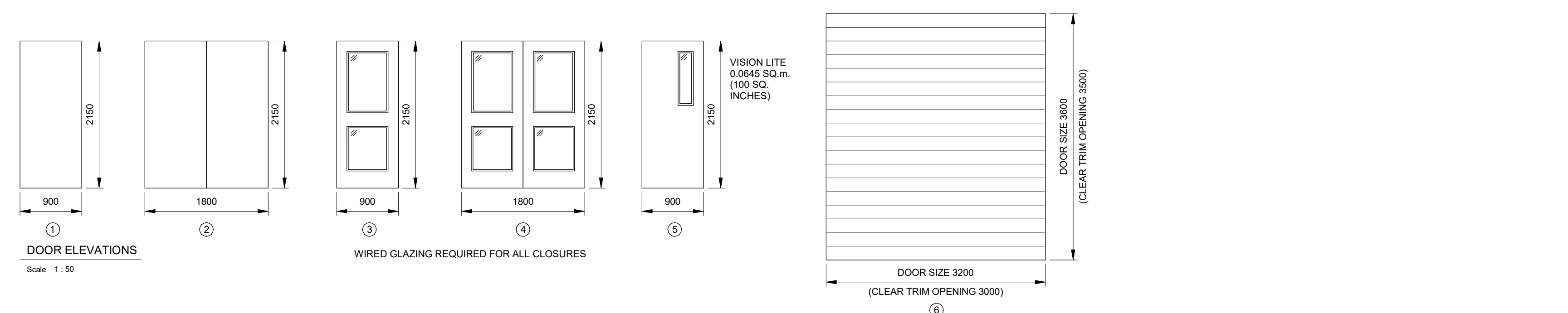


DOOR SCHEDULE																	
No.	DOOR			DOOR NOMINAL SIZE			DOOR FRAME				MINIMUM FIRE LABEL	BARRIER FREE INSTALL	REMARKS	HARDWARE CODES	INSIDE	OUTSIDE (KEY SIDE)	DOOR HANDING
	MATERIAL	FINISH	ELEVATION	THICKNESS	WIDTH	HEIGHT	TYPE	MATERIAL	FINISH	ELEVATION							
D001	INS-ST	PT	1	45	900	2150	A	HM	PT	1	0.75 HR		A,B,C,D,E,I,J,S	SUCTION GALLERY	STAIR (109)	LHRB	
D002	INS-ST	PT	1	45	900	2150	A	HM	PT	1	0.75 HR		A,B,C,D,E,I,J,S	SUCTION GALLERY	STAIR (110)	RHRB	
D101	INS-ST	PT	2	45	2-950	2150	B	THM	PT	2			A,B,C,D,E,I,K,L,M,P,S,T	ENTRY	EXTERIOR	RHRBA	
D102	INS-ST	PT	2	45	2-950	2150	B	THM	PT	2			A,B,C,D,E,I,K,L,M,P,S,T	CHEMICAL ROOM 2	EXTERIOR	RHRBA	
D103	INS-ST	PT	2	45	2-950	2150	B	THM	PT	2			A,B,C,D,E,I,K,L,M,P,S,T	CHEMICAL ROOM 1	EXTERIOR	RHRBA	
D104	INS-ST	PT	1	45	900	2150	B	THM	PT	1			A,B,C,D,E,I,K,L,M,P,S,T	PUMP GALLERY	EXTERIOR	RHRB	
D105	INS-ST	PT	1	45	900	2150	B	THM	PT	1			A,B,C,D,E,I,K,L,M,P,S	STAIR (109)	EXTERIOR	LHRB	
D106	INS-ST	PT	1	45	900	2150	B	THM	PT	1			A,B,C,D,E,I,K,L,M,P,S	STAIR (110)	EXTERIOR	RHRB	
D107	INS-ST	PT	6	45	3200	3600	B	THM	PT	2			D,K,M	PUMP GALLERY	EXTERIOR	-	
D108	INS-ST	PT	1	45	900	2150	B	THM	PT	1			A,B,C,D,E,I,K,L,M,P,S	PUMP GALLERY	EXTERIOR	LHRB	
D109	INS-ST	PT	6	45	3200	3600	B	THM	PT	2			D,K,M	GARAGE / STORAGE	EXTERIOR	-	
D110	HM	PT	2	45	2-950	2150	A	HM	PT	2	0.75 HR		A,B,C,D,E,I,J,S,T	CHEMICAL ROOM 1	PUMP GALLERY	LHA	
D111	HM	PT	1	45	900	2150	A	HM	PT	1	0.75 HR		A,B,C,D,E,I,J,S	CHEMICAL ROOM 2	PUMP GALLERY	RH	
D112	HM	PT	2	45	2-950	2150	A	HM	PT	2	0.75 HR		A,B,C,D,E,I,J,S,T	ELECTRICAL	PUMP GALLERY	RHA	
D113	HM	PT	2	45	2-950	2150	A	HM	PT	2			A,B,C,D,E,I,J,S,T	PUMP GALLERY	ENTRY	RHRBA	
D114	HM	PT	1	45	900	2150	A	HM	PT	1	0.75 HR		A,B,C,D,E,I,J,S	GARAGE / STORAGE	PUMP GALLERY	LH	
D115	HM	PT	3	45	900	2150	A	HM	PT	1			A,B,C,D,E,I,J,S	OFFICE	ENTRY	LH	
D116	HM	PT	1	45	900	2150	A	HM	PT	1	0.75 HR		A,B,C,D,E,I,J,S	GARAGE / STORAGE	ENTRY	RH	
D117	HM	PT	1	45	900	2150	A	HM	PT	1	0.75 HR		A,B,C,D,E,I,J,S	STAIR (110)	PUMP GALLERY	RHRB	



DOOR NOTES:

- UNDER CUT WASHROOM DOORS TO MEET VENTILATION REQUIREMENTS.
- ALL GLAZING TO BE TEMPERED. USE GEORGIAN WIRE GLAZING AS NOTED, OR WHERE REQUIRED TO MEET FIRE RATING REQUIREMENTS.
- INSULATE ALL EXTERIOR DOORS AND FRAMES.
- ALL STEEL FRAMES TO BE WELDED.
- ALL DOORS LOCATED IN A FIRE SEPARATION ARE TO BE EQUIPPED WITH A POSITIVE LATCHING MECHANISM DESIGNED TO HOLD THE DOOR CLOSED AFTER EACH USE IN ACCORDANCE WITH ONTARIO BUILDING CODE ARTICLE 3.1.8.13.
- AFTX BARRIER-FREE SIGNAGE TO DOORS AS PER BUILDING CODE.
- GLAZING IN EXTERIOR DOORS TO BE DOUBLE GLAZED EXTERIOR DOUBLE DOORS TO INCLUDE VERTICAL ROD PANIC HARDWARE ON INTERIOR AND LOCKING THUMB LATCH ON EXTERIOR OF LEFT LEAF. SELF CLOSER WITH HOLD OPEN ON INTERIOR OF LEFT LEAF. WELDED ASTRAGAL ON EXTERIOR OF LEFT LEAF. SWING LIMITING HOLD OPEN ON INTERIOR OF RIGHT LEAF. DEAD BOLTS AT TOP AND BOTTOM OF RIGHT LEAF. CONFIRM R.O.O OPENING REQUIREMENTS WITH MANUFACTURER AND PROVIDE OPENING AS REQUIRED.
- SEE ELECTRICAL & PROJECT SPECIFICATION FOR KEYLESS ENTRY SYSTEM INCLUDING ELECTRIC DOOR STRIKE, CARD READER, & ALARM REQUIREMENTS. COORDINATE AS REQUIRED.
- INTERIOR DOUBLE DOORS D??? AND D??? TO INCLUDE VERTICAL ROD PANIC HARDWARE ON INTERIOR AND PASSAGE SET ON EXTERIOR OF LEFT LEAF. SELF CLOSER WITH HOLD OPEN ON INTERIOR OF LEFT LEAF. WELDED ASTRAGAL ON EXTERIOR OF LEFT LEAF. SWING LIMITING HOLD OPEN ON INTERIOR OF RIGHT LEAF. DEAD BOLT AT TOP AND BOTTOM OF RIGHT LEAF.

DOOR HARDWARE CODES:

A. BUTT HINGES
 B. DOOR CLOSER
 C. SELF-LATCHING HARDWARE
 D. LOCKABLE PASSAGE SET
 E. PANIC HARDWARE
 G. PUSH/PULL BARRIER-FREE HARDWARE
 H. KICK PLATE
 J. DOOR STOP
 K. WEATHER STRIPPING
 L. THRESHOLD
 M. SWEEP
 N. KEY ACCESS FROM EXIT
 O. WASHROOM SET (PRIVATE)
 P. WIND LIMITER (INTEGRAL WITH CLOSER)
 Q. UNIVERSAL BARRIER FREE SIGNAGE
 R. POWER DOOR OPERATOR
 S. ACCESS CONTROL SYSTEM
 T. WELDED ASTRAGAL

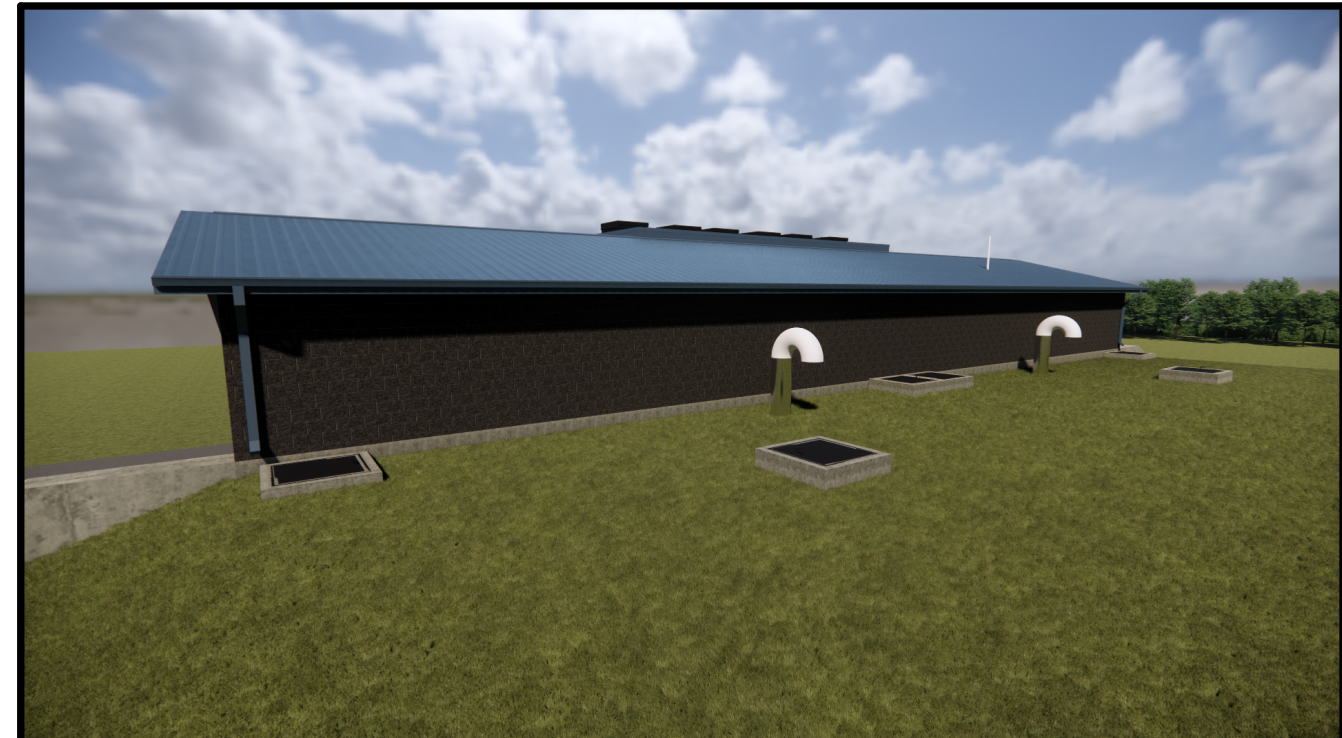
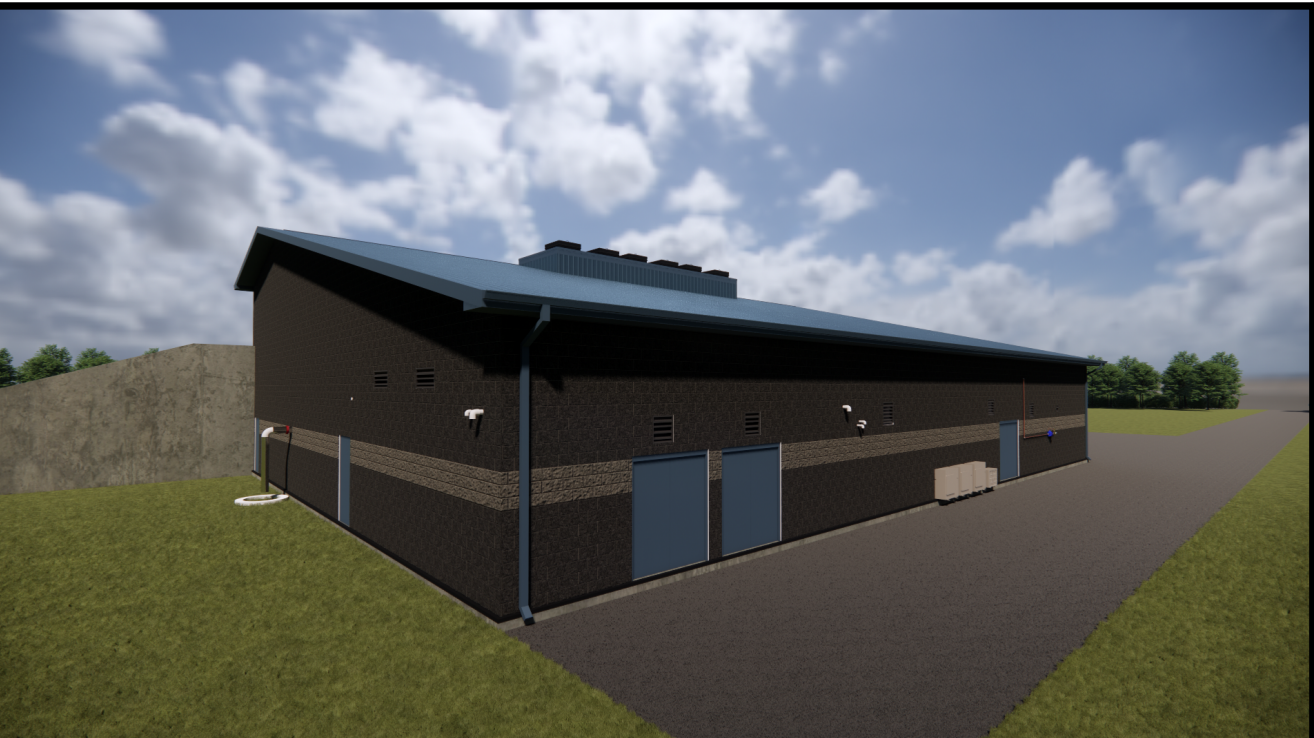
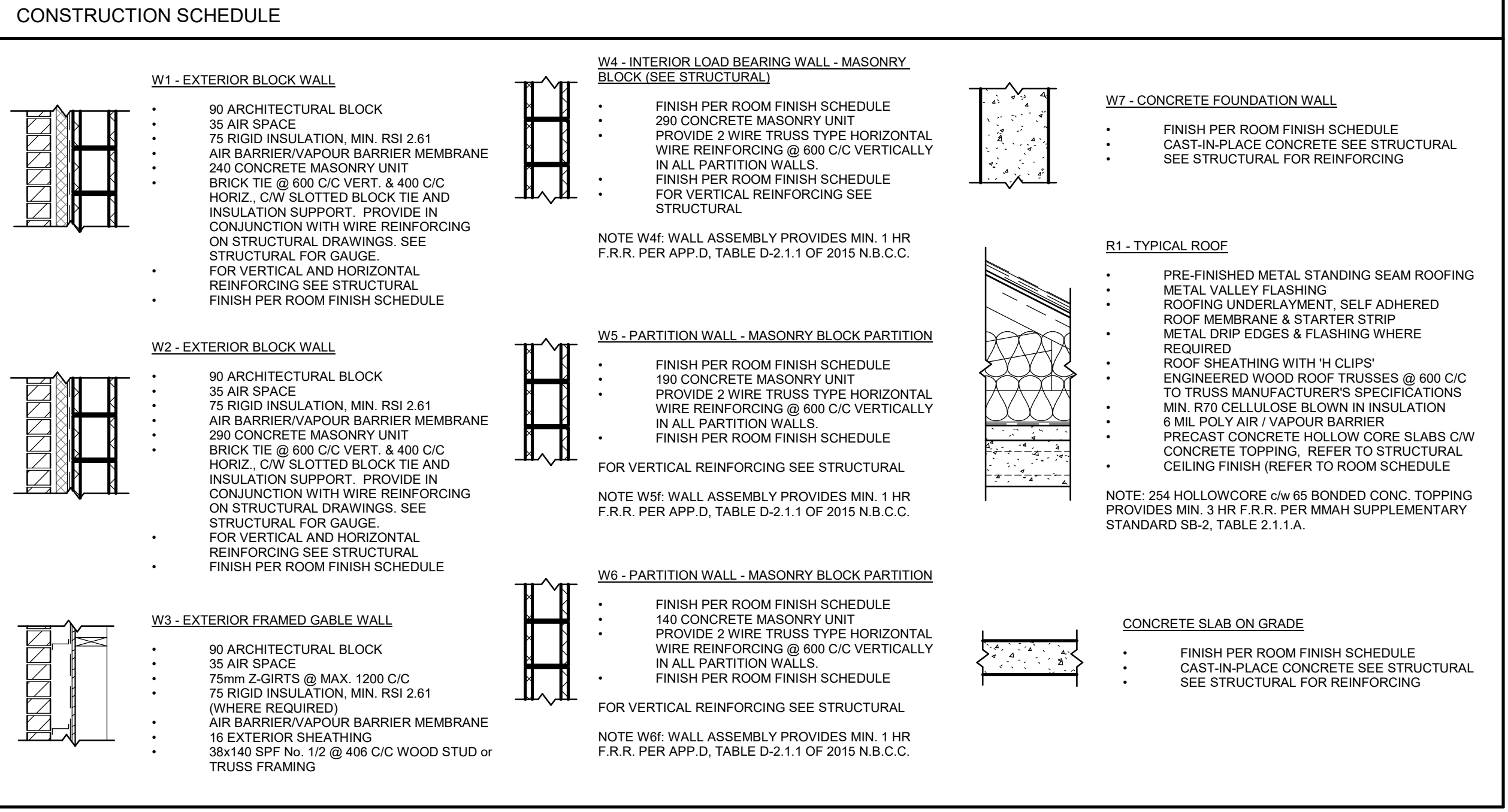
DOOR HANDING NOTES:

- *S* INDICATES KEYED SIDE OF LOCK
- HAND OF DOOR IS ALWAYS DETERMINED FROM THE OUTSIDE

No.	Issue / Revision	Date	Auth.
1	ISSUED FOR CLIENT REVIEW	21/08/06	
2	ISSUED FOR MECP APPROVAL	22/04/29	
3	ISSUED FOR TENDER	22/06/17	

ROOM FINISH SCHEDULE										ROOM FINISH LEGEND				
ROOM NUMBER	ROOM NAME	NORTH WALL		EAST WALL		SOUTH WALL		WEST WALL		FLOOR		CEILING		COMMENTS
		MATERIAL	FINISH	MATERIAL	FINISH	MATERIAL	FINISH	MATERIAL	FINISH	MATERIAL	FINISH	MATERIAL	FINISH	
101	CHEMICAL ROOM 1	CMU	PT	CMU	PT	CMU	PT	CMU	PT	CONC.	CS			SECONDARY CONTAINMENT COATING (SEE SPECIFICATIONS) TO BE APPLIED TO ALL FLOOR AND WALL AREAS OF SECONDARY CONTAINMENT AREA FOR THE STORAGE TANKS IN EACH CHEMICAL ROOM.
102	CHEMICAL ROOM 2	CMU	PT	CMU	PT	CMU	PT	CMU	PT	CONC.	CS			SECONDARY CONTAINMENT COATING (SEE SPECIFICATIONS) TO BE APPLIED TO ALL FLOOR AND WALL AREAS OF SECONDARY CONTAINMENT AREA FOR THE STORAGE TANKS IN EACH CHEMICAL ROOM.
103	ELECTRICAL	CMU	PT	CMU	PT	CMU	PT	CMU	PT	CONC.	CS			
104	OFFICE	CMU	PT	CMU	PT	CMU	PT	CMU	PT	CONC.	CS		ACT	ACCOUSTICAL CEILING TILE AT 3000 AFF.
105	ENTRY	CMU	PT	CMU	PT	CMU	PT	CMU	PT	CONC.	CS			
106	GARAGE / STORAGE	CMU	PT	CMU	PT	CMU	PT	CMU	PT	CONC.	CS			
107	PUMP GALLERY	CMU	PT	CMU	PT	CONC.	PT	CMU	PT	CONC.	CS			
108	STAIR	CMU	PT	CMU	PT	CONC.	PT	CMU	PT	CONC.	CS			
109	STAIR	CMU	PT	CMU	PT	CONC.	PT	CMU	PT	CONC.	CS			
001	SUCTION GALLERY	CONC.	PT	CONC.	PT	CONC.	PT	CONC.	PT	CONC.	CS			

ROOM FINISH SCHEDULE										ROOM FINISH LEGEND				
ROOM NUMBER	ROOM NAME	NORTH WALL		EAST WALL		SOUTH WALL		WEST WALL		FLOOR		CEILING		COMMENTS
		MATERIAL	FINISH	MATERIAL	FINISH	MATERIAL	FINISH	MATERIAL	FINISH	MATERIAL	FINISH	MATERIAL	FINISH	
101	CHEMICAL ROOM 1	CMU	PT	CMU	PT	CMU	PT	CMU	PT	CONC.	CS			SECONDARY CONTAINMENT COATING (SEE SPECIFICATIONS) TO BE APPLIED TO ALL FLOOR AND WALL AREAS OF SECONDARY CONTAINMENT AREA FOR THE STORAGE TANKS IN EACH CHEMICAL ROOM.
102	CHEMICAL ROOM 2	CMU	PT	CMU	PT	CMU	PT	CMU	PT	CONC.	CS			SECONDARY CONTAINMENT COATING (SEE SPECIFICATIONS) TO BE APPLIED TO ALL FLOOR AND WALL AREAS OF SECONDARY CONTAINMENT AREA FOR THE STORAGE TANKS IN EACH CHEMICAL ROOM.
103	ELECTRICAL	CMU	PT	CMU	PT	CMU	PT	CMU	PT	CONC.	CS			
104	OFFICE	CMU	PT	CMU	PT	CMU	PT	CMU	PT	CONC.	CS		ACT	ACCOUSTICAL CEILING TILE AT 3000 AFF.
105	ENTRY	CMU	PT	CMU	PT	CMU	PT	CMU	PT	CONC.	CS			
106	GARAGE / STORAGE	CMU	PT	CMU	PT	CMU	PT	CMU	PT	CONC.	CS			
107	PUMP GALLERY	CMU	PT	CMU	PT	CONC.	PT	CMU	PT	CONC.	CS			
108	STAIR	CMU	PT	CMU	PT	CONC.	PT	CMU	PT	CONC.	CS			
109	STAIR	CMU	PT	CMU	PT	CONC.	PT	CMU	PT	CONC.	CS			
001	SUCTION GALLERY	CONC.	PT	CONC.	PT	CONC.	PT	CONC.	PT	CONC.	CS			



BURNSIDE

R.J. Burnside & Associates Limited
 3 Ronell Crescent,
 Collingwood, Ontario, L9Y 4J8
 telephone (705) 446-0515
 fax (705) 446-2399
 web www.rjburnside.com

Client: **CLEARVIEW TOWNSHIP**
 217 GIDEON STREET
 STAYNER, ONTARIO
 L0M 1S0

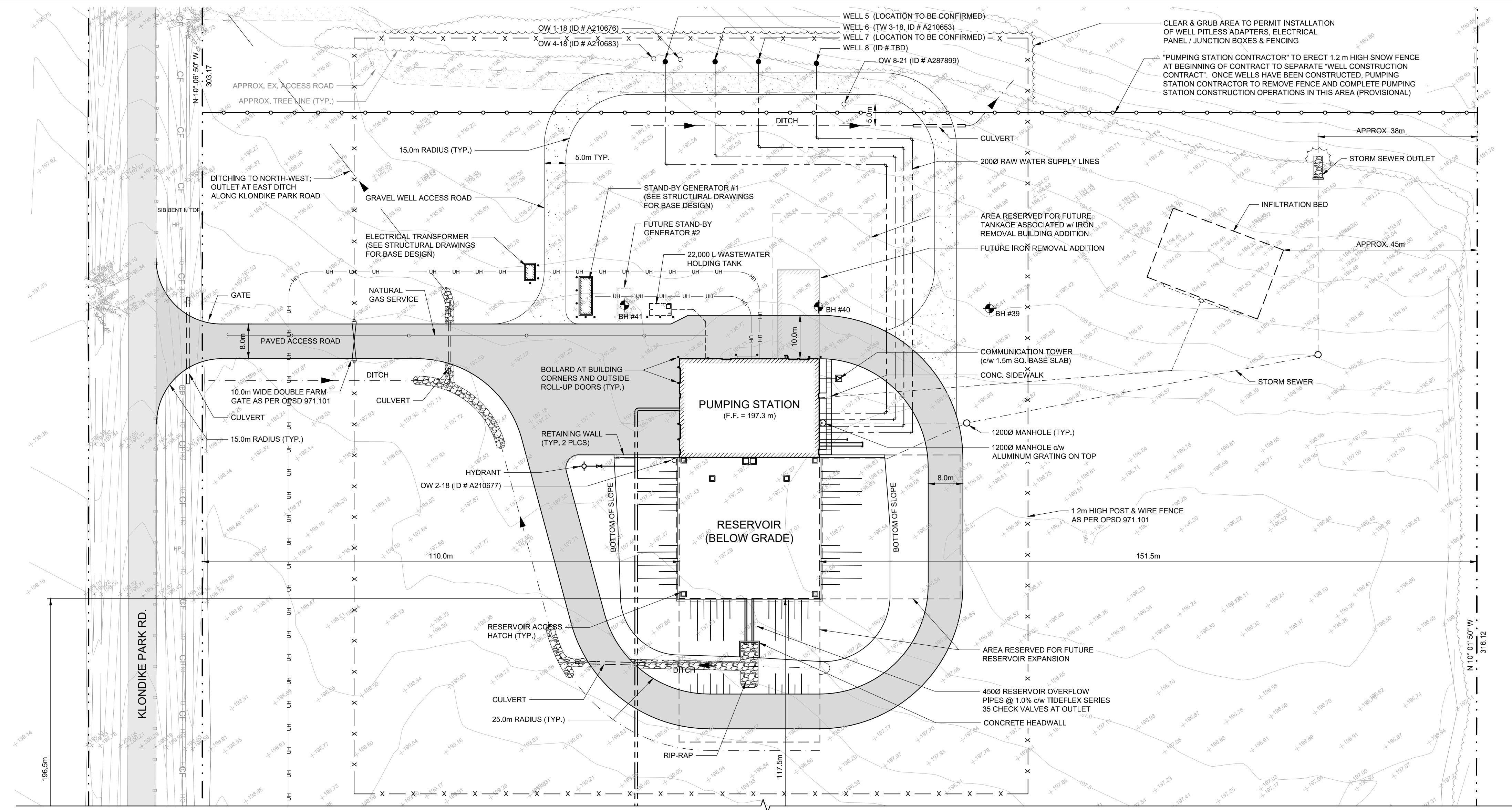
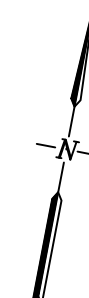
Drawing Title: **KLONDIKE PARK ROAD WELL SITE, RESERVOIR & PUMPING STATION SCHEDULES**

Drawn	Checked	Designed	Checked	Date	Drawing No.
T.T.	P.W.	P.W.	P.W.	JULY 2021	

Project No. 300052874
 Contract No. 300052874.0000
 Revision No. 3
 Scale: N.T.S.

A001

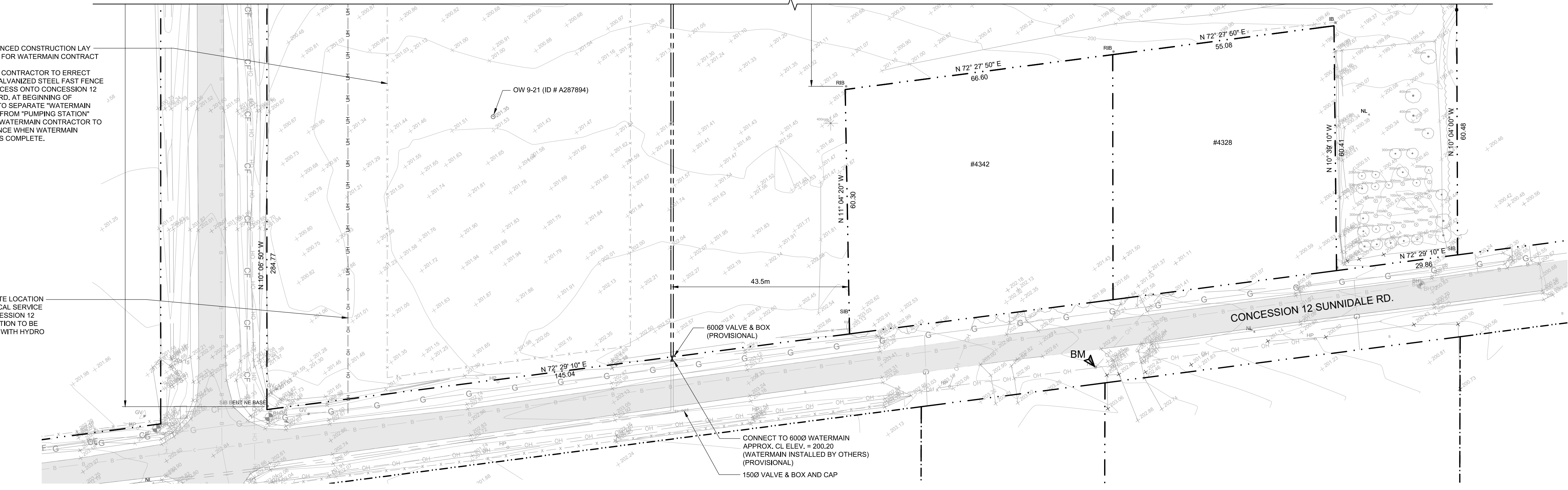
NOT FOR CONSTRUCTION



- ### LEGEND
- EXISTING**
- - - - - PROPERTY LINE / ROW
 - x - x - x - CHAIN LINK FENCE
 - SPOT ELEVATION
 - SIB STD IRON BAR
 - IB IRON BAR
 - RIB ROUND IRON BAR
 - HP HYDRO POLE
 - BELL PED BELL PED
 - C CABLE PED CABLE PED
 - GV GAS VALVE GAS VALVE
 - STREET SIGN STREET SIGN
 - DECIDUOUS TREE DECIDUOUS TREE
 - CONIFEROUS TREE CONIFEROUS TREE
 - G - G - U/G GASMAIN
 - B - B - U/G BELL
 - CF - CF - U/G CABLE / FIBRE
 - OH - OH - OVERHEAD HYDRO
 - BH# BOREHOLE
- PROPOSED**
- ▬ PAVED ACCESS ROAD
 - ▬ GRAVEL ACCESS ROAD
 - ▬ CONCRETE SIDEWALK
 - ▬ WATERMAIN
 - HYDRANT
 - VALVE & BOX
 - PRODUCTION WELL
 - OW # ## OBSERVATION WELL
 - - - - - DITCH
 - - - - - STORM SEWER & MANHOLE
 - - - - - WASTE WATER SEWER
 - GATE
 - RESERVOIR ACCESS HATCH
 - BOLLARD
 - BM SURVEY BENCHMARK
 - ▬ SLOPE
 - ▬ RIP RAP
 - OH - OH - OVERHEAD ELECTRICAL SERVICE
 - UH - UH - U/G ELECTRICAL SERVICE
 - - - - - TEMPORARY SNOW FENCE

60 x 100m FENCED CONSTRUCTION LAY DOWN AREA FOR WATERMAIN CONTRACTOR TO ERRECT 1.8m HIGH GALVANIZED STEEL FAST FENCE c/w GATE ACCESS ONTO CONCESSION 12 SUNNIDALE RD. AT BEGINNING OF CONTRACT TO SEPARATE "WATERMAIN CONTRACT" FROM "PUMPING STATION" CONTRACT. WATERMAIN CONTRACTOR TO REMOVE FENCE WHEN WATERMAIN CONTRACT IS COMPLETE.

APPROXIMATE LOCATION OF ELECTRICAL SERVICE FROM CONCESSION 12 (FINAL LOCATION TO BE CONFIRMED WITH HYDRO ONE)



Notes
 1. This drawing is the exclusive property of R. J. Burnside & Associates Limited. The reproduction of any part without prior written consent of this office is strictly prohibited.
 2. The contractor shall verify all dimensions, levels, and datums on site and report any discrepancies or omissions to this office prior to construction.
 3. This drawing is to be read and understood in conjunction with all other plans and documents applicable to this project.

No.	Issue / Revision	Date	Auth.
1	ISSUED FOR CLIENT REVIEW	21/08/06	
2	ISSUED FOR MECP APPROVAL	22/04/29	
3	ISSUED FOR TENDER	22/06/17	

SURVEY BENCHMARK (BM):
 EL. 202.93m
 SPIKE IN NORTH EAST SIDE OF HYDRO POLE, ON SOUTH SIDE OF CONCESSION 12 SUNNIDALE RD. NEAR ENTRANCE TO LOT NO. 4339. (578514.012m E, 4923438.34m N)



R.J. Burnside & Associates Limited
 3 Ronell Crescent,
 Collingwood, Ontario, L9Y 4J6
 telephone (705) 446-0515
 fax (705) 446-2399
 web www.rjburnside.com

Drawing Title
KLONDIKE PARK ROAD WELL SITE, RESERVOIR & PUMPING STATION SITE PLAN

Drawn	Checked	Designed	Checked	Date	Drawing No.
J.R.	R.C.	R.C.	J.L.L.	MAR. 2022	
Project No.	Contract No.	Revision No.			
300052874	300052874.0000	2			

C101

NOT FOR CONSTRUCTION